



FISHING TACKLE





AMERICAN FISHING TACKLE CO.

FISHING ACCESSORIES

Saiko Pro Fluorocarbon	4
Fillet Knives	8
Fish Care	12
Bags & Storage	14
Belts & Harnesses	19
Gloves	24
Gaffs	28
Bait Nets	36
Clips & More	37

ROD BUILDING COMPONENTS

Roller Guides & Tip-Tops	42
Rod Building Guide	50
Rod Butts	52
Rod Butt Accessories	54

10% PLEDGE
Protect & Conserve







SAIKO PRO™

100% FLUOROCARBON LEADER



Saiko Pro is a 100% custom formula fluorocarbon made in Japan for optimum leader performance. Features a supple yet hard finish that provides supreme abrasion resistance—up to 20% stronger after abrasion than leading competitors. The knot and crimped strength of Saiko Pro is unmatched, and the line will generate bites from finicky tuna, billfish and inshore species when the other brands get refused!



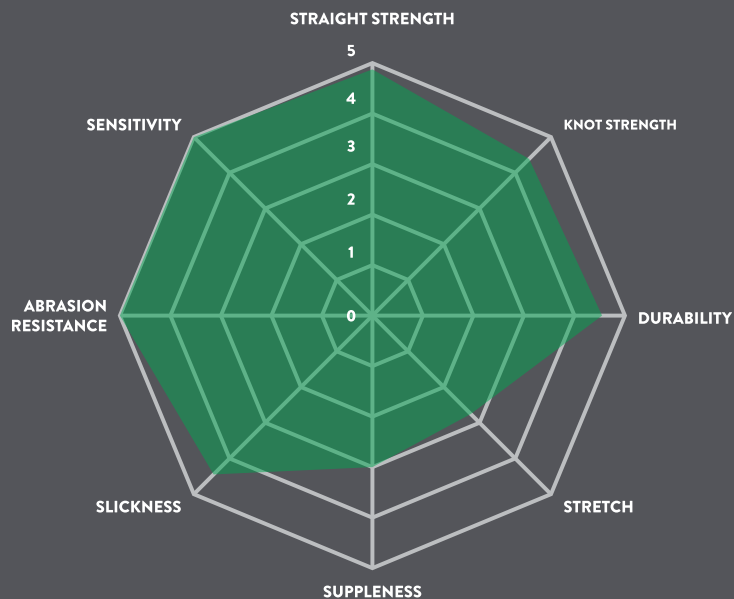
100% custom formula fluorocarbon made in Japan for optimum leader performance.



Made for gamefish, not lab testing.
Stronger after abrasion than leading competitors.



AFTCO SecureSpool™ makes leader storage a cinch.
No more messy, uncoiled and disorganized leader spools.



NEARLY INVISIBLE LEADER GETS THE BITES WHEN THE OTHER BRANDS GET REFUSED!



Unparalleled line diameter to strength ratio. I'm able to use a thinner leader without sacrificing strength or abrasion resistance. Outstanding product!

Benny Ortiz, Slow Pitch Jedi
Fort Lauderdale, Florida



The toughest and most abrasion resistant fluoro we've ever used, which is a huge advantage fishing oil rigs off the coast of Louisiana.

Eric & Moe Newman, Journey South Outfitters
Venice, Louisiana



It gets bites when we need them the most, especially when our fleet is competing in high stakes tournaments.

Will Drost, Maverick Costa Rica
Los Sueños, Costa Rica



PART NUMBER	LB TEST	KG	DIAMETER		LENGTH	MSRP
SF2512	12 lb	6.5 kg	.011 in	.281 mm	25 yd	\$13.00
SF2515	15 lb	8.9 kg	.013 in	.330 mm	25 yd	\$13.00
SF2520	20 lb	14.0 kg	.017 in	.433 mm	25 yd	\$14.00
SF2525	25 lb	16.2 kg	.019 in	.473 mm	25 yd	\$16.00
SF2530	30 lb	21.9 kg	.022 in	.565 mm	25 yd	\$19.00
SF2540	40 lb	25.8 kg	.024 in	.620 mm	25 yd	\$23.00
SF2550	50 lb	29.2 kg	.026 in	.660 mm	25 yd	\$28.00
SF2560	60 lb	40.0 kg	.030 in	.770 mm	25 yd	\$32.00
SF2580	80 lb	42.8 kg	.032 in	.810 mm	25 yd	\$38.00
SF35100	100 lb	51.8 kg	.042 in	1.068 mm	35 yd	\$90.00
SF35130	130 lb	58.7 kg	.046 in	1.175 mm	35 yd	\$95.00
SF35150	150 lb	74.9 kg	.050 in	1.281 mm	35 yd	\$97.00
SF35200	200 lb	99.5 kg	.057 in	1.445 mm	35 yd	\$100.00
SF35220	220 lb	132.5 kg	.066 in	1.677 mm	35 yd	\$103.00
SF35300	300 lb	137.1 kg	.072 in	1.828 mm	35 yd	\$105.00
SF5012	12 lb	6.5 kg	.011 in	.281 mm	50 yd	\$25.00
SF5015	15 lb	8.9 kg	.013 in	.330 mm	50 yd	\$25.00
SF5020	20 lb	14.0 kg	.017 in	.433 mm	50 yd	\$27.00
SF5025	25 lb	16.2 kg	.019 in	.473 mm	50 yd	\$30.00
SF5030	30 lb	21.9 kg	.022 in	.565 mm	50 yd	\$36.00
SF5040	40 lb	25.8 kg	.024 in	.620 mm	50 yd	\$44.00
SF5050	50 lb	29.2 kg	.026 in	.660 mm	50 yd	\$54.00
SF5060	60 lb	40.0 kg	.030 in	.770 mm	50 yd	\$64.00
SF5080	80 lb	42.8 kg	.032 in	.810 mm	50 yd	\$74.00
SF10030	30 lb	21.9 kg	.022 in	.565 mm	100 yd	\$68.00
SF10040	40 lb	25.8 kg	.024 in	.620 mm	100 yd	\$84.00
SF10050	50 lb	29.2 kg	.026 in	.660 mm	100 yd	\$104.00
SF10060	60 lb	40.0 kg	.030 in	.770 mm	100 yd	\$123.00
SF10080	80 lb	42.8 kg	.032 in	.810 mm	100 yd	\$138.00

SAIKO^{PRO}TM

WIND-ON LEADER

A new addition to the Saiko Fluorocarbon lineup. Available in two lengths: 15 feet from 40lb to 80lb which are tournament legal and 12 feet in 100lb to 300lb. These leaders are hand-crafted in Japan utilizing a whipping process that is not only strong but offers a slim design which is helpful going through clips or guides on your rod.

PART NUMBER	LB TEST	KG	DIAMETER	LENGTH	MSRP
SFWO1540	40 lb	25.8 kg	.024 in .620 mm	15 ft	\$24.00
SFWO1550	50 lb	29.2 kg	.026 in .660 mm	15 ft	\$26.00
SFWO1560	60 lb	40.0 kg	.030 in .770 mm	15 ft	\$28.00
SFWO1580	80 lb	42.8 kg	.032 in .810 mm	15 ft	\$30.00
SFWO12100	100 lb	51.8 kg	.042 in 1.068 mm	12 ft	\$36.00
SFWO12130	130 lb	58.7 kg	.046 in 1.175 mm	12 ft	\$38.00
SFWO12150	150 lb	74.9 kg	.050 in 1.281 mm	12 ft	\$40.00
SFWO12200	200 lb	99.5 kg	.057 in 1.445 mm	12 ft	\$42.00
SFWO12220	220 lb	132.5 kg	.066 in 1.677 mm	12 ft	\$44.00
SFWO12300	300 lb	137.1 kg	.072 in 1.828 mm	12 ft	\$46.00





FILLET KNIVES

From Walleye to Wahoo, AFTCO's fillet knives provide the right tools to get the job done.

Available in 7", 8", 9", 10" and 12" models.



- Böker 4116 German stainless steel blade
- Full tang construction
- 56-58 Rockwell hardness, sub-zero quench process
- Upswept blade design maintains cutting surface when filleting game fish





AFTCO FILLET KNIVES

AFTCO's fish fillet knives are built in collaboration with Böker Germany to deliver premium blade options for gamefish processing of all sizes. The range of AFTCO fillet knives features 4116 German stainless steel blades with full tang construction and an upswept design. The premium Böker blades are easily distinguished with a gold TiN / PVD finish that is bonded, ensuring durable corrosion resistance. A 56-58 Rockwell hardness and sub-zero quench process helps maintain blade sharpness and edge retention. The handle features an overmolded slip-free polypropylene / TPR surface that is both anatomically and ergonomically correct for optimum in-hand feel.

PART NUMBER	DESCRIPTION	BLADE LENGTH	UPC	MSRP
AFK12	AFTCO Fillet Knife	12 in	193646008407	\$89.00
AFK10	AFTCO Fillet Knife	10 in	193646008391	\$79.00
AFKF09	AFTCO Flex Fillet Knife	9 in	193646030323	\$79.00
AFK08	AFTCO Fillet Knife	8 in	193646008384	\$69.00
AFKF07	AFTCO Flex Fillet Knife	7 in	193646030316	\$69.00



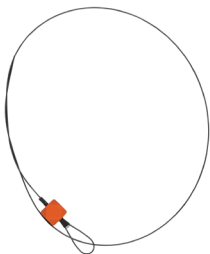
KNIFE CASE

AFKCASE | MSRP: \$39.00

- 600D Polyester
- 1" poly web handle with strap
- YKK zipper
- Holds up to 3 AFTCO knives
- Open ended pocket for standard 2" x 8" sharpening stone







CIRCUIT BREAKER IKE JIME KIT

Ike jime is central to Japanese standards for the highest quality seafood in the world. Scientifically proven to improve the smell, texture, and flavor of harvested fish, ike jime starts by spiking the fish's brain and draining the fish's blood. Paralyzing the fish by destroying the spinal cord (shinkei jime) elevates the quality further. Until now, professional ike jime tools have been unavailable in the West.

The Circuit Breaker is specially designed to destroy the full length of a fish's spinal cord and paralyze the fish completely. The memory-resistant wire will not bend or kink even after repeated use. It is lightweight, portable, and single-stranded for easy sterilization. Available in a variety of gauges and lengths.

PART NUMBER	WIRE GAUGE	WIRE LENGTH	UPC	MSRP
CB2220	22 g	20 in	193646048151	\$29.00
CB1820	18 g	20 in	193646048144	\$29.00
CB1430	14 g	30 in	193646048120	\$69.00
CB1450	14 g	50 in	193646048137	\$89.00



**KEEP YOUR CATCH
FRESHER, LONGER**



FISH FILLET ABSORBENT PADS (10 COUNT)

PADL | MSRP: \$7.50

Fish fillet absorbent pads are FDA approved for direct contact with fish and keep fillets free of blood and moisture, ensuring your catch stays fresher longer.

- Keeps fillets free of blood & moisture
- Preserves the quality of your catch
- Helps avoid "fishy taste"
- Absorbent rating of 375g
- FDA approved
- Includes 10 pads



BACKPACK

ABPGDC | MSRP: \$89.00

- 420D Polyester
- Seam-sealed tarpaulin base
- YKK zippers
- Duraflex ladder lock buckle



URBAN ANGLER BACKPACK

UABPACK | MSRP: \$99.00

Easily fit your tackle essentials into this custom-built pack. The main pocket fits a 3600 size box perfectly and the outer pocket fits a 3640. Includes 5 plastic storage sleeves for hooks or plastics.

- 420D Polyester
- 1.5L hydration pack with magnetic tube holder
- Main body fits 3600 size box, outer pocket fits 3640
- Pliers holder & rod holder
- Trampoline back with lumbar support



BOAT BAG

ABBGDC | MSRP: \$59.00

- 600D Polyester
- Seam-sealed tarpaulin base
- Nylon zippers
- Adjustable shoulder strap
- Duraflex ladder lock buckle



OVERNIGHT BAG

AOBGDC | MSRP: \$149.00

- 600D Polyester
- Seam-sealed tarpaulin base
- YKK zippers with oversized pulls
- Adjustable shoulder strap
- 25 x 4 bottom section and removable liner



HYDRONAUT STUFF SACK

AFTSS | MSRP: \$69.00

- 100% waterproof tarpaulin shell
- Welded seams
- Outer pocket for additional storage
- Fold over top with clip to keep your items dry
- Heavy-duty adjustable shoulder strap



THE ULTIMATE FISH FIGHTING SYSTEMS.

AFTCO has relied on innovative design, precision engineering, the finest materials and exhaustive testing to create the ultimate fish fighting systems. For bluewater anglers, AFTCO fighting belts and harnesses provide maximum comfort and leverage for battling big game fish.

30-LB TO 130-LB TACKLE



MAXFORCE XH HARNESS

HRNSXH1 | MSRP: \$145.00

- The perfect match for 30-lb to 130-lb tackle.
- Molded 20mm closed-cell EVA foam padding with an added 12mm EVA lumbar pad for extra support and comfort. Outer layer is a durable stretch CORDURA® polyester.
- Self-adjusting reel attachment straps prevent harness from riding up and provide the best pulling angle for maximum leverage.
- Stainless D-rings for drop straps are double sewn and cross-stitched into harness.
- Double box stitched ultra heavy-duty nylon web straps with “quick change” hook-n-loop closure for one size fits most adjustability.
- Molded, double riveted and box stitched safety/grab handle.
- Additional extender strap for larger waist sizes.
- Adjustable one size fits most (28-50” waist).

30-LB TO 130-LB TACKLE



MAXFORCE HARNESS

HRNS1 | MSRP: \$100.00

- The perfect match for 30-lb to 130-lb tackle.
- Molded 20mm closed-cell EVA foam padding with a durable stretch CORDURA® outer cover.
- Self-adjusting reel attachment straps prevent harness from riding up and provide the best pulling angle for maximum leverage.
- Stainless D-rings for drop straps are double sewn and cross-stitched into harness.
- Double box stitched heavy-duty nylon web straps with “quick change” hook-n-loop closure for one size fits most adjustability.
- Molded, double riveted and box stitched safety/grab handle.
- Additional extender strap for larger waist sizes.
- Adjustable one size fits most (28-50” waist).

REPLACEMENT BELT STRAP

BVSTRAP1 | MSRP: \$15.00

- Double box-stitched ultra-heavy duty adjustable 2” nylon web.
- Designed for use with AFTCO BELT 1, 2, 3, Vallarta, Clarion, Socorro, and Alijos.



UP TO 50-LB TACKLE



MAXFORCE SHOULDER HARNESS

HRNS2 | MSRP: \$100.00

- For up to and including 50-lb tackle.
- Full mesh back with bio-foam shoulder padding and back band distribute the load comfortably, allowing the shoulders and upper body to be used for leverage during extended battles.
- Spring-loaded stainless steel carabiner clips assure a secure attachment to reel harness lugs.
- Strategically placed stainless steel ladder locks adjust easily, even when under load for the perfect fish-fighting position.
- Heavy-duty nylon web straps are cross and box-stitched for extreme durability.

SPIN STRAP

SPINSTRAP1 | MSRP: \$12.00



- Designed to wrap around the foregrip of a spinning rod.
- Two D-rings attach to harness snaps for added pulling leverage when using spinning tackle to fight larger game fish.
- A special tacky material sewn into the strap helps grab the foregrip and prevent slippage when pulled tight by the harness snaps.
- Can also be used for leverage behind conventional reels that have no lugs for attaching a harness.
- Ideal for use with AFTCO Maxforce harnesses.



BELT & HARNESS DROP STRAPS KIT

STRAP1 | MSRP: \$16.00

- Designed for use with AFTCO stand-up gear.
- Used in place of belt straps, drop straps attach to posts at each side of AFTCO fighting belts and can extend to 2.5"-5".
- Fully adjustable to customize the position of fighting belts on the thigh for maximum leverage.

80-LB TO UNLIMITED TACKLE



VALLARTA XL FIGHTING BELT

BELTXL1 | MSRP: \$185.00

- Our largest belt—ideal for battling the biggest game fish!
- The perfect match for 80-lb to unlimited tackle.
- Extra thick, closed-cell EVA foam pad is molded on backside with vent slots and contours engineered for superior comfort.
- Stainless steel gimbal pin can be positioned in gimbal pocket horizontally, vertically or removed.
- Double box-stitched ultra heavy-duty adjustable 2" nylon straps.
- Gimbal pocket molded from super strong, glass-filled nylon.
- Heavy-duty yet lightweight stamped aluminum front plate deeply anodized in a rich gold finish for extreme durability and corrosion resistance.
- Perfect match for the AFTCO Maxforce and Maxforce XH harnesses.
- Adjustable one size fits most (28-50" waist).

80-LB TO UNLIMITED TACKLE



CLARION FIGHTING BELT

BELT1 | MSRP: \$150.00

- The perfect match for 80-lb to unlimited tackle.
- Extra thick, closed-cell EVA foam pad is molded on backside with vent slots and contours engineered for superior comfort.
- Stainless steel gimbal pin can be positioned in gimbal pocket horizontally, vertically or removed.
- Double box-stitched ultra heavy-duty adjustable 2" nylon straps.
- Gimbal pocket molded from super strong, glass-filled nylon.
- Heavy-duty yet lightweight stamped aluminum front plate deeply anodized in a rich gold finish for extreme durability and corrosion resistance.
- Perfect match for the AFTCO Maxforce harness.
- Adjustable one size fits most (28-50" waist).

50-LB TO 80-LB TACKLE



SOCORRO FIGHTING BELT

BELT2 | MSRP: \$130.00

- The perfect match for 50-lb to 80-lb tackle.
- Extra thick, closed-cell EVA foam pad is molded on backside with vent slots and contours engineered for superior comfort.
- Stainless steel gimbal pin can be positioned in gimbal pocket horizontally, vertically or removed.
- Double box-stitched ultra heavy-duty adjustable 2" nylon straps.
- Gimbal pocket molded from super strong, glass-filled nylon.
- Heavy-duty yet lightweight stamped aluminum front plate deeply anodized in a rich gold finish for extreme durability and corrosion resistance.
- Perfect match for the AFTCO Maxforce harness.
- Adjustable one size fits most (28-50" waist).

20-LB TO 50-LB TACKLE



ALIJOS FIGHTING BELT

BELT3 | MSRP: \$85.00

- The premier day belt for use with 20-lb to 50-lb tackle.
- Thick, closed-cell EVA foam pad is molded on backside with vent slots and contours engineered for superior comfort.
- Stainless steel gimbal pin can be removed.
- Gimbal pocket lined with thermal-formed nylon to resist scarring.
- Double box-stitched ultra heavy-duty adjustable 2" nylon web straps.
- Lightweight stamped aluminum front plate deeply anodized in a rich gold finish for extreme durability and corrosion resistance.
- Adjustable one size fits most (28-50" waist).

12-LB TO 30-LB TACKLE



ARENA FIGHTING BELT

BELT4 | MSRP: \$65.00

- The perfect light tackle day belt for use with 12-lb to 30-lb tackle.
- High-grade aluminum front plate deeply anodized in a rich gold finish for extreme durability and corrosion resistance.
- Bonded, closed-cell polyurethane foam back pad.
- Black anodized CNC machined aluminum gimbal cup swivels up and down.
- Double box-stitched ultra heavy-duty adjustable 2" nylon web straps.
- Adjustable one size fits most (28-50" waist).



SECAS FIGHTING BELT

BELT5 | MSRP: \$35.00

- Perfect for stand-up fishing for Sailfish, Dolphin, King Mackerel, small Tuna, and Yellowtail.
- Injection molded HDPE for extreme durability.
- Thick closed-cell EVA pad for superior comfort.
- Double box stitched poly web strap with Velcro closure.
- Removable stainless steel cross pin.
- Adjustable one size fits most (28-50" waist).



Blue
(BLU)



WIREMAX GLOVES

GLOVEWM3 | SIZES: M-XXL | MSRP: \$79.00

- Tacky palm, thumb and fingertips enhances dexterity and grip
- Spandura® 4-way stretch back hand material for added durability and flex
- Closed-cell EVA foam covered with super tough Armortex® protects hands when wrapping leaders
- Refined Armortex® palm and middle fingers for improved comfort
- Wrap-around neoprene wrist strap with Velcro® TPR closure over woven cuff for a secure fit and added wrist support

Blue
(BLU)



RELEASE GLOVES

GLOVER3 | SIZES: M-XXL | MSRP: \$39.00

- Thumb, index and middle fingers double reinforced
- Index finger and thumb incorporate a cell touch panel for touchscreen capabilities
- Super tough Armortex® on index finger and outer glove maximizes protection when leading big fish
- AX Suede G-Series palm panels improve grip in wet conditions
- Spandura® 4-way stretch back hand material keeps hands cool and protected
- Neoprene cuff with Velcro® closure ensures a secure fit

Blue
(BLU)



Blue Camo
(BCAM)



Blue Scatter
(BSCA)



UTILITY GLOVES

GLOVEU3 | SIZES: M-XXL | MSRP: \$29.00

- Index finger and thumb incorporate a cell touch panel for touchscreen capabilities
- AX Suede G-Series palm panels improve grip in wet conditions
- Spandura® 4-way stretch back hand material keeps hands cool and protected
- Synthetic microfleece sweat wipe
- Neoprene cuff with Velcro® closure ensures a secure fit

Blue Camo
(BCAM)



Blue
(BLU)



SOLMAR UV GLOVES

GLOVESUV3 | SIZES: M-XXL | MSRP: \$29.00

- AFBLOCK 50 blocks 98% of the sun's harmful UV rays
- ½ Length fingers for increased dexterity and feel
- Clarino™ synthetic leather palm for added durability
- Poron XRD® Smartfoam palm pads help reduce fatigue
- Microfleece sweat wipe thumb panel
- Woven elastic cuff

Blue
(BLU)



Blue Camo
(BCAM)



Blue Scatter
(BSCA)



SOLPRO GLOVES

GLOVEPRO | SIZES: M-XXL | MSRP: \$35.00

- AFBLOCK 50 blocks 98% of the sun's harmful UV rays
- AFCOOL quick dry, moisture wicking main body and cuff
- ¾ Length fingers and open palm for increased dexterity and feel
- Extra-long cuff for added sun protection
- AX Suede G-Series grip ensures secure palming of reel
- Reinforced finger and thumb panels
- Breathable mesh fourchettes

Blue
(BLU)



Blue Camo
(BCAM)



Blue Scatter
(BSCA)



SHORT PUMP GLOVES

GLOVESP3 | SIZES: S-XXL | MSRP: \$25.00

- ½ Length fingers for increased dexterity and feel when rigging baits and tying knots
- Spandura® 4-way stretch back hand material keeps hands cool and protected
- Tacky diamond grip palm
- Synthetic terrycloth sweat wipe
- Breathable foam-backed mesh cuff with Velcro® closure ensures a secure fit

Blue
(BLU)



Blue Camo
(BCAM)



JIGPRO GLOVES

GLOVEJ | SIZES: M-XXL | MSRP: \$45.00

- AFBLOCK 50 blocks 98% of the sun's harmful UV rays
- Breathable perforated synthetic leather palm
- Reinforced finger panels for added durability
- AX Suede G-Series palm panels improve grip in wet conditions
- Full finger performance fit
- Airprene® vented cuff with TPR Velcro® closure



Blue
(BLU)



ELEMENT GLOVES

GLOVEE | SIZES: M-XXL | MSRP: \$35.00

- Microfleece lined poly thermal outer barrier
- Sure Grip .5mm synthetic leather palm with thermal microfleece maintains warmth without affecting dexterity or feel
- Neoprene cuff with TPR closure for added support and insulation to keep the cold out

Gray
(GRA)



FILLET GLOVES

GLOVEFG | SIZES: M-L / L-XL | MSRP: \$14.00

- ANSI Level 5 Cut Resistance
- HPPE Dyneema® knit construction
- Polyurethane dipped palm and fingers for enhanced grip

Blue
(BLU)



WINDBLOK GLOVES

GLOVEW | SIZES: M-XXL | MSRP: \$30.00

- Thermal lined windproof design
- Half fingers for maximum dexterity and feel
- Palm and fingers enhanced with HD silicone texture
- Side zippers and pull loops make removal easy
- Extra-long zippered cuff keeps the elements out



TAPERED FOR SPEED. SWAGED FOR POWER.

AFTCO's Taper-Tip Gaffs are easier to maneuver in the water and react faster to the actions of the fish. The taper allows more room for precise gaffing and the swaging process provides uniform strength throughout while eliminating extra weight. The end of the hook rod is knurled and flared, then press-fit into the tapered tube to create a mechanical lock that prevents the hook from pulling out.







TAPER-TIP ALUMINUM GAFFS

AVAILABLE IN GOLD ANODIZED FINISHES

The slim, tapered shape of AFTCO's Taper-Tip Aluminum Gaffs makes them lightning fast in the water—easier to maneuver and deadly accurate. They're stronger and lighter too, so they bring the fish to the boat with less flailing and confusion. The shafts are made from corrosion-resistant marine aluminum and they are swaged for uniform strength from end to end, but with no unnecessary weight. Available in our traditional rich gold and anodized for lasting beauty and resistance to saltwater corrosion. All models are fitted with soft but rugged black grips molded from the same non-slip material found on the finest fishing rods. Vinyl butt caps seal out corrosive moisture and prevent deck scarring.

"L" indicates 3/4 inch outer diameter of tube at butt. All other models feature 1 inch outer diameter.

PART NUMBER	GAFF LENGTH	HOOK THROAT WIDTH	HOOK DIAMETER	MSRP	
GFA353	3 ft	3 in	5/16 in	\$85.00	FLOATING
GFA354L	4 ft	3 in	5/16 in	\$85.00	FLOATING
GFA354	4 ft	3 in	5/16 in	\$95.00	FLOATING
GFA464	4 ft	4 in	3/8 in	\$100.00	
GFA365	5 ft	3 in	3/8 in	\$105.00	
GFA465	5 ft	4 in	3/8 in	\$105.00	
GFA356	6 ft	3 in	5/16 in	\$110.00	FLOATING
GFA256	6 ft	2 in	5/16 in	\$105.00	FLOATING
GFA366	6 ft	3 in	3/8 in	\$115.00	
GFA466	6 ft	4 in	3/8 in	\$120.00	
GFA586	6 ft	5 in	1/2 in	\$135.00	
GFA368	8 ft	3 in	3/8 in	\$140.00	
GFA468	8 ft	4 in	3/8 in	\$145.00	



12' KING MACKEREL GAFF

GFAKM12 | MSRP: \$229.00

Ideal for king mackerel tournament fishermen, the AFTCO 12 foot two-piece gaff features a black anodized shaft that is divided into an 8 foot forward section with hook and a 4 foot rear section, complete with two rugged black vinyl grips. Constructed from 6061-T6 marine grade aluminum, this model is joined in the middle with a ferrule and collet nut. Both the ferrule and collet nut are permanently attached to the forward section which can optionally be used as a standalone gaff. Equipped with a 3 inch stainless steel hook, this is the perfect gaff for landing king mackerel, wahoo, dolphin and tuna, as well as other medium-sized saltwater game fish. Available in black anodized finish.





FLYING GAFF HANDLE

FG8 | MSRP: \$190.00

- Slip, tapered design
- Swaged for uniform strength
- Custom gimbal to hold rope and fit into rocket launcher
- Fits new 4" FGH4 hook only



FLYING GAFF HANDLE

FG6 | MSRP: \$185.00

The slim, tapered tips of AFTCO's Flying Gaffs slice through the water faster and with greater accuracy to minimize the problems of gaffing powerful fish. The 6 foot 7 inch shafts of our Flying Gaffs are swaged for uniform strength from end to end, thereby eliminating unnecessary weight. The hook seats in a tough plastic insert fitted into the gaff tip and is held in place by a length of 20-lb test line tied to a steel post affixed to the shaft. When a fish is gaffed, this line snaps, providing a clean and immediate release. A machined aluminum gimbal at the butt of the shaft secures the attachment rope and prevents water from seeping into the shaft. If dropped overboard, the gaff handle (minus the hook) will float. Available in gold anodized finish.



FLYING GAFF HOOKS

For our 5, 6, 8, 10 and 13 inch hook sizes, the barbs are made from corrosion resistant stainless steel and will not straighten out in use. The triangular points give better penetration and are easy to sharpen. All five hooks fit the same shaft and feature 1 inch diameter tubing reinforced by a fully gusseted and welded bend.

The 4 inch hook is designed with the barb on the outside to allow a bigger bite. Only fits the new FG8 fly gaff shaft.

PART NUMBER	HOOK SIZE	MSRP
FGH4	4 in	\$130.00
FGH5	5 in	\$135.00
FGH6	6 in	\$159.00
FGH8	8 in	\$189.00
FGH10	10 in	\$299.00
FGH13	13 in	\$425.00



FLY GAFF ROPE KIT

FGROPE25 | MSRP: \$79.00

- 25 feet of ½-inch diameter 3-strand nylon rope
- 6000lb breaking strength
- 12-inch cleat loop
- 316 stainless steel 5/16-inch bow shackle



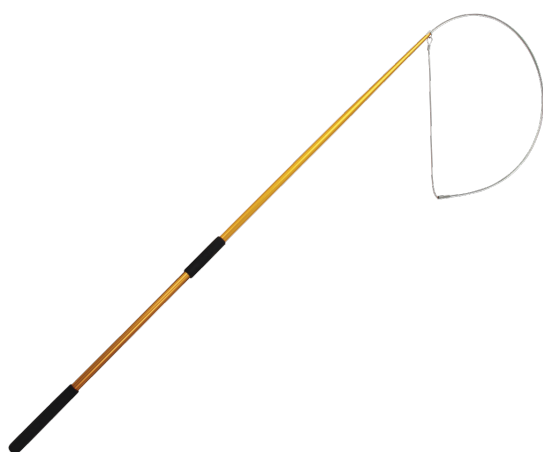
TAPERED FIBERGLASS GAFFS

AVAILABLE IN DARK BROWN

AFTCO Tapered Fiberglass Gaffs feature special thick-walled, super strong yet lightweight E-glass handle construction custom designed for extreme strength and rigidity. All our fiberglass handles are rolled on proprietary mandrels using specific tapers developed by AFTCO and are fitted in our factory with the same stainless steel hooks used on our aluminum gaffs. Featuring a rich dark brown epoxy finish with hand wrapped black and metallic gold trim, each gaff has a functional black nylon seine cord handle and Turk's head. The 6 and 8 foot models float if dropped overboard.

PART NUMBER	GAFF LENGTH	HOOK THROAT WIDTH	HOOK DIAMETER	MSRP
GFF24	4 ft	2 in	3/8 in	\$100.00
GFF34	4 ft	3 in	3/8 in	\$100.00
GFF26	6 ft	2 in	3/8 in	\$115.00
GFF36	6 ft	3 in	3/8 in	\$120.00
GFF46	6 ft	4 in	3/8 in	\$130.00
GFF28	8 ft	2 in	3/8 in	\$145.00
GFF38	8 ft	3 in	3/8 in	\$145.00
GFF48	8 ft	4 in	3/8 in	\$150.00





RELEASE TAILER

MST1 | MSRP: \$125.00

The AFTCO Release Tailer is 4 feet long and has an 18 inch diameter capture loop that will lift fish up to 100 pounds into the boat. It features a 6061-T6 swaged aluminum shaft anodized in a rich gold for lasting beauty and resistance to corrosion. The ¼ inch aircraft cable is also highly resistant to corrosion. The smaller cable—which closes around the tail—is plastic coated to protect the fish.



6' TAG STICK

TSA6 | MSRP: \$89.00

The AFTCO Tag Stick features the same 6061-T6 swaged aluminum shaft and tapered tip design as our gaffs for quick, accurate handling in the water. Fitted with two black non-slip grips and available in a black or rich gold anodized finish. Overall length is 6 feet and comes equipped with a TSH2 head.



TAG STICK POINTED APPLICATOR

TSH2 | MSRP: \$8.00

Fits standard Billfish Foundation (TBF) tags and newer NMFS tags with nylon heads designed for pointed applicators.

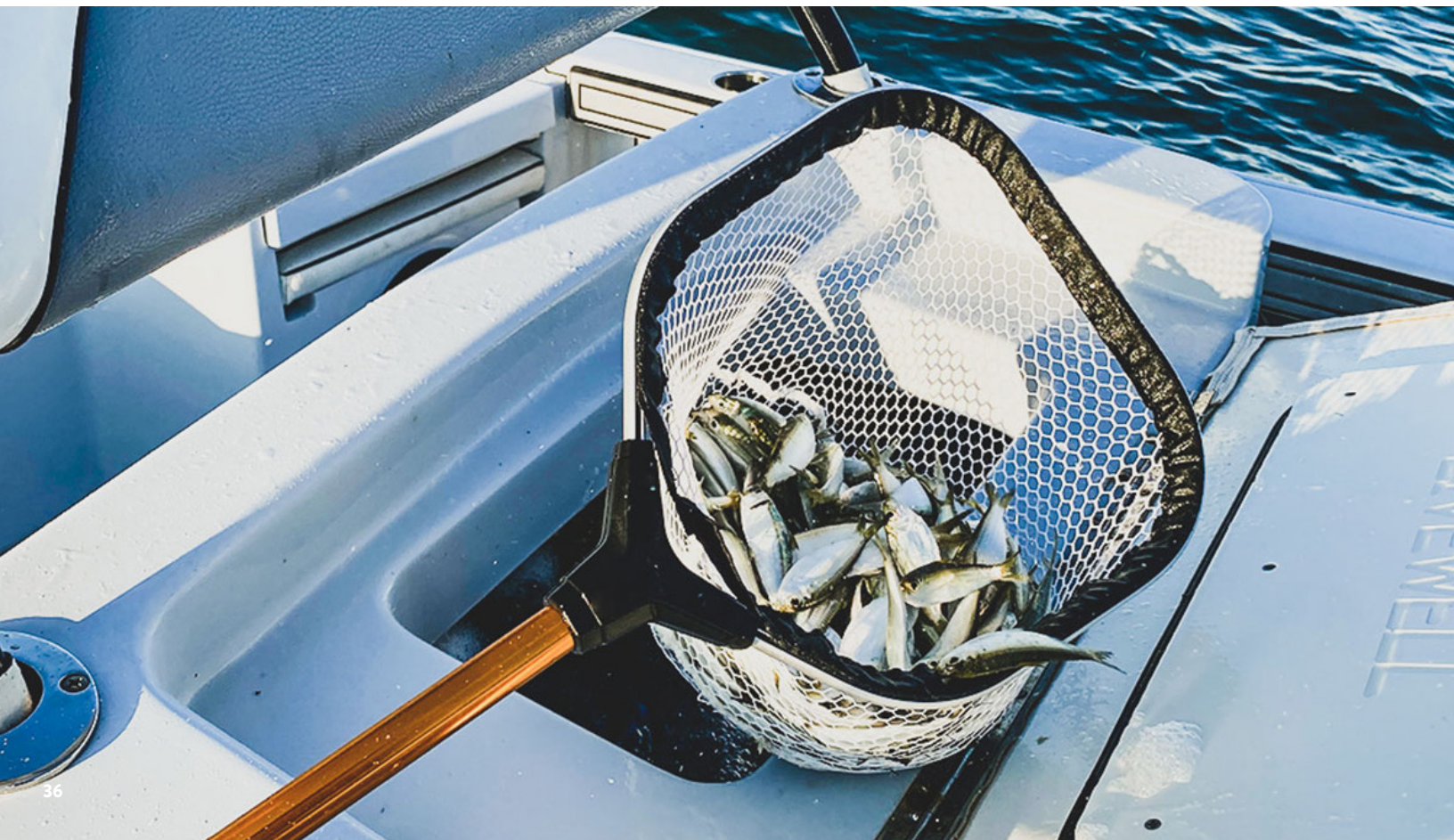


ANODIZED BAIT NETS

AVAILABLE WITH GOLD ANODIZED HANDLES

AFTCO's Bait Nets are the perfect choice for scooping delicate baits like anchovies, menhaden and sardines. The D-shaped aluminum net hoops are available in 8 and 10 inch widths and allow for easy capture of the liveliest baits because they'll reach into the corners of the bait well. The net attaches to the hoops with a special track system that not only eliminates abrasion to the netting but minimizes damage to the baits during the scooping process and protects the inside of the tank from being chipped or scratched. Available in lengths of 12, 18 and 24 inches with gold anodized aluminum handles and black vinyl grips.

PART NUMBER	HANDLE LENGTH	HOOP WIDTH	MSRP
NET128	12 in	8 in	\$20.00
NET188	18 in	8 in	\$24.00
NET1810	18 in	10 in	\$27.00
NET2410	24 in	10 in	\$30.00





ROLLER-TROLLER OUTRIGGER CLIP (2PC)

OR1 | MSRP: \$65.00

The AFTCO Roller-Troller Outrigger Clip helps you position a trolling lure from an outrigger by simply reeling in or letting out line right through the clip, where the line rides safely on a roller that features silky-smooth action. The clip's improved micro-tension adjustment is sensitive over a wide range of settings. Once the tension is set, our precision-engineered latching system releases your line repeatedly at the exact same pull to assure fewer missed strikes and less broken line and gear.



FLAT LINE CLIP

FL1 | MSRP: \$35.00

AFTCO Flat Line Clips put lines trolled from the stern of the boat into the water at a lower angle to minimize tangling and keep your lures below the surface for better action. When a fish strikes, you'll know at the instant the clip snaps open to release the line. The Flat Line Clip is fitted with 135-lb coated stainless cable and a heavy-duty snap swivel.



OUTRIGGER RELEASE CLIP

OC1 | MSRP: \$19.00

Outrigger Release Clips should be attached directly to the outrigger halyard without the use of swivels. The adjustment slider end of the clip needs to be up towards the tip of the outrigger. For fixed position bait trolling, the fishing line should be twisted 5 to 10 times before hooking loop over the clip's bail. The line may also be passed over the bail without twists to allow for adjustment of baits or lures.



DOWNRIGGER RELEASE CLIP

DC1 | MSRP: \$12.00

Downrigger Release Clips should be attached directly to the cable above the downrigger ball. This is best accomplished by threading one side of the clip onto the cable, then placing a crimp on the cable before passing it through the remaining half of the clip. Once the cable has been terminated with the cannonball's snap, the clip can be positioned approximately one foot above the ball. The crimp should then be swaged into place. Note that the clip must be positioned with the adjustment slider down or towards the bail. The fishing line should be twisted 10 to 15 times before placing it over the release bail.



KITE CLIP KIT 11PC SET

KCK1 | MSRP: \$34.00

The Kite Clip Kit has everything needed (except the Dacron or monofilament line) to set up a kite fly line for fishing one or two baits. Each 11-piece set includes:

- 2 Release Clips
- 5 Kite Hooks
- 3 Barrel Swivels
- 1 Heavy-Duty Snap



KITE RELEASE CLIP

KC1 | MSRP: \$19.00

The Kite Release Clip is essentially the same clip as the Downrigger Release Clip, but with a gold titanium nitride coated bail. Packaged with 5 Kite Hooks, the Kite Clip is designed for single or multiple clip use on kite fly lines. For single use, the clip can simply be threaded on the fly line. For multiple use, the clip's slider holes may be drilled out to allow swivels up to a #5 size to pass through. The enclosed kite hooks should be hooked onto the fishing line and the clip's bail should be passed through the hole opposite of the hook. This allows the fishing line to be positioned properly in the Kite Clip once the bait is deployed.



KITE CLIP 12PC HOOK SET

KHOOK1 | MSRP: \$7.00

Our Kite Clip 12PC Hook Set includes 12 non-abrasive kite hooks.



UTILITY LANYARD

PLNYD1 | MSRP: \$8.00

AFTCO's flexible coil lanyard is made from durable vinyl and features heavy-duty swivel snaps at both ends for connecting pliers to grommets typically found at the tip end of pliers cases. Kayak anglers find these lanyards particularly useful for securing any number of tackle items to their customized fishing platforms.

FISH BAT

FBAT2 | MSRP: \$25.00



AFTCO's Fish Bat is made of molded glass-filled polypropylene that's super strong and corrosion proof with a special triangular shape that will not roll on the deck of a rocking boat. Features include a textured grip for non-slip performance, braided rope safety lanyard and a handle hook for convenient hanging from a railing or ladder. Measuring 19 inches long and weighing in at 1.3 pounds, this bat hits very hard—and if it falls overboard, it floats!



LONG CONSIDERED THE WORLD'S FINEST.

Our long legacy of building the finest in fishing tackle was launched back in 1958 with the development of AFTCO roller guides and tip-tops. Over the years, we have maintained the highest level of quality and performance by using the finest materials available, and by continually testing virtually all types of lines and guides under conditions that closely simulate rigorous fishing action.

Please refer to separate pricelist. Rod parts are not available through your AFTCO sales rep. Please send all questions to customercare@aftco.com





DESCRIPTION	PART NUMBER
#62 SXHD Guide	SXHD62
#72 SXHD Guide	SXHD72
#82 SXHD Stripper Guide	SXHD82
Complete Set of 5 (Includes 2 #62s, 2 #72s, 1 #82)	SXHD96

COLORS: Black (B)



DESCRIPTION	PART NUMBER
#62 SXHD Ball Bearing Guide	BBSXHD62
#72 SXHD Ball Bearing Guide	BBSXHD72
#82 SXHD Ball Bearing Guide	BBSXHD82
Complete Set of 5 (Includes 2 #62s, 2 #72s, 1 #82)	BBSXHD96

COLORS: Black/Gold (BG)

SUPER EXTRA HEAVY DUTY ROLLER GUIDES

AFTCO's Super Extra Heavy Duty roller guides and tip-tops are not only built for super strength, but most importantly, they offer unequalled .410-inch knot clearance—the greatest of any roller guides on the market—to accommodate the bulkiest leader rigs for tackling the biggest game fish. For matching strength against strength, massive guide frames are machined from 6061-T6 billet aluminum and fashioned in the distinctive AFTCO shape. The SXHD's are designed to handle the heaviest lines, and like all AFTCO roller guides and tip-tops, are equipped with extra large, extra tough rollers and bearings.

The configuration of all AFTCO SXHD guides is trademarked under Registration #1,615,844

SUPER EXTRA HEAVY DUTY ROLLER GUIDES WITH BALL BEARINGS

The SXHD ball bearing models—the finest guides for the heaviest line classes—feature space-age ceramic ball bearings, meeting the highest standards in quality and corrosion resistance. Special Delrin insulators and stainless steel logo plates eliminate corrosion between rollers and frames. Oversized contoured feet are designed to grip rods with exceptional strength, and edges are feathered to allow winding thread to climb over the feet easily.



SUPER EXTRA HEAVY DUTY ROLLER TIP-TOPS

AFTCO's Super Extra Heavy Duty tip-tops are built for super strength and offer unequalled .410-inch knot clearance—the greatest of any roller guide or tip-top on the market. Machined from 7075-T7 billet aluminum (to resist wear) for the heaviest lines and the biggest fish!

DESCRIPTION	INNER DIA.	PART NUMBER
#516 SXHD Tip-Top	16/64 in	SXHD516
#518 SXHD Tip-Top	18/64 in	SXHD518
#520 SXHD Tip-Top	20/64 in	SXHD520
#522 SXHD Tip-Top	22/64 in	SXHD522
#524 SXHD Tip-Top	24/64 in	SXHD524
#526 SXHD Tip-Top	26/64 in	SXHD526
#528 SXHD Tip-Top	28/64 in	SXHD528
#530 SXHD Tip-Top	30/64 in	SXHD530
#532 SXHD Tip-Top	32/64 in	SXHD532
#534 SXHD Tip-Top	34/64 in	SXHD534
#536 SXHD Tip-Top	36/64 in	SXHD536

COLORS: Black (B)



SUPER EXTRA HEAVY DUTY ROLLER TIP-TOPS WITH BALL BEARINGS

The configuration of all AFTCO SXHD roller tops is trademarked under Registration #1,643,711

DESCRIPTION	INNER DIA.	PART NUMBER
#516 Ball Bearing Tip-Top	16/64 in	BBSXHD516
#518 Ball Bearing Tip-Top	18/64 in	BBSXHD518
#520 Ball Bearing Tip-Top	20/64 in	BBSXHD520
#522 Ball Bearing Tip-Top	22/64 in	BBSXHD522
#524 Ball Bearing Tip-Top	24/64 in	BBSXHD524
#526 Ball Bearing Tip-Top	26/64 in	BBSXHD526
#528 Ball Bearing Tip-Top	28/64 in	BBSXHD528
#530 Ball Bearing Tip-Top	30/64 in	BBSXHD530
#532 Ball Bearing Tip-Top	32/64 in	BBSXHD532
#534 Ball Bearing Tip-Top	34/64 in	BBSXHD534
#536 Ball Bearing Tip-Top	36/64 in	BBSXHD536

COLORS: Black/Gold (BG)





DESCRIPTION	PART NUMBER
#32 SHD Guide	SHD32
#42 SHD Guide	SHD42
#52 SHD Guide	SHD52
Complete Set of 5 (Includes 2 #32s, 2 #42s, 1 #52)	SHD76

COLORS: Black (B), Chrome (CRM)



DESCRIPTION	PART NUMBER
#22 Wind-On Guide	WO22
#47 Wind-On Guide	WO47
Complete Set of 5 (2 #WO22s, 2 #SHD32s, 1 #WO47)	WO66

COLORS: Black (B), Chrome (CRM)



DESCRIPTION	PART NUMBER
#32 SHD Ball Bearing Guide	BBSHD32
#42 SHD Ball Bearing Guide	BBSHD42
#52 SHD Ball Bearing Stripper Guide	BBSHD52
Complete Set of 5 (Includes 2 #32s, 2 #42s, 1 #52)	BBSHD76
#22 Wind-On Ball Bearing Guide	BBWO22
#47 Wind-On Ball Bearing Stripper Guide	BBWO47
Complete Set of 5 (Includes 2 #22s, 2 #32s, 1 #47)	BBWO66

COLORS: Black/Gold (BG)

BIG FOOT® SUPER HEAVY DUTY ROLLER GUIDES

AFTCO's superb line of Big Foot® Super Heavy Duty (SHD) roller guides feature rugged, roomy frames with unequalled knot clearance. Rollers and bearings are extra large and extra tough to endure the special punishment of the heaviest line class. AFLON™, an exclusive Teflon® formulation, is bonded to all bearings to provide lasting lubrication and protection. The oversized feet are precisely formed to match the contours of rods, and they grip the rod with exceptional strength. The edges are feathered to allow winding thread to climb over the feet easily. A complete set of five includes the double roller stripper guide and two each of the two super heavy duty single-roller guides, graduated in size.

The configuration of all AFTCO Big Foot® guides is trademarked under Registration #1,615,844

WIND ON ROLLER GUIDES

AFTCO's Wind-On guide set is specifically designed to accommodate the knots and connections of wind-on leaders, which have become increasingly popular for big game fishing. The guides will handle lines from 30-lb to unlimited line class, and they have the same knot clearance as our Big Foot® guides, but in a more compact frame. They will easily handle bulky wind-on leaders up to 700-lb test, and they are also available with ball bearing assemblies for the ultimate in line protection and performance. Wind-On guides can be used on 30, 50 and 80-lb class IGFA rods and on extra-heavy stand-up rods. The guide feet are perfectly formed to fit blanks with tip sizes down to 12/64ths inner diameter.

The configuration of all AFTCO Wind-On guides is trademarked under Registration #1,615,844

BIG FOOT® SUPER HEAVY DUTY / WIND ON ROLLER GUIDES WITH BALL BEARINGS

AFTCO's Big Foot® Super Heavy Duty (BBSHD) and Wind-On (BBWO) Ball Bearing roller guides offer the highest standards for performance and durability, and virtually eliminate maintenance concerns! These are the "Rolls Royce" of roller guides—costly perhaps, but simply the finest ever made. The ball bearings are satellite quality, and precision-built to the tolerances only AFTCO guides offer. AFTCO ball bearing roller guides, with the same unequalled knot clearance of other Big Foot® guides, are available ONLY with the rollers, pins and screws in a Gold titanium nitride finish, but with frames in your choice of Black Chrome oxide or our traditional Chrome-plate finish. This is a precision built product, and the only maintenance required is a wash-off with fresh water. Big Foot® SHD Ball Bearing roller tip-tops are the match for these guides.

The configuration of all AFTCO Big Foot® and Wind-On guides is trademarked under Registration #1,615,844



BIG FOOT® SUPER HEAVY DUTY ROLLER TIP-TOPS

Designed to match our Big Foot® Super Heavy Duty and Wind-On roller guides, these oversized tip-tops are extra large, extra tough, virtually foul-proof and offer huge .250-inch knot clearance.

DESCRIPTION	INNER DIA.	PART NUMBER
#312 SHD Tip-Top	12/64 in	SHD312
#314 SHD Tip-Top	14/64 in	SHD314
#316 SHD Tip-Top	16/64 in	SHD316
#318 SHD Tip-Top	18/64 in	SHD318
#320 SHD Tip-Top	20/64 in	SHD320
#322 SHD Tip-Top	22/64 in	SHD322
#324 SHD Tip-Top	24/64 in	SHD324
#326 SHD Tip-Top	26/64 in	SHD326
#328 SHD Tip-Top	28/64 in	SHD328
#330 SHD Tip-Top	30/64 in	SHD330
#332 SHD Tip-Top	32/64 in	SHD332
#334 SHD Tip-Top	34/64 in	SHD334
#336 SHD Tip-Top	36/64 in	SHD336

COLORS: Black (B), Chrome (CRM)



BIG FOOT® SUPER HEAVY DUTY ROLLER TIP-TOPS WITH BALL BEARINGS

A match for our Big Foot® Super Heavy Duty Ball Bearing roller guides, these are the finest tip-tops made. The ball bearings are satellite quality, and precision-built to the tolerances only AFTCO tip-tops offer.

DESCRIPTION	INNER DIA.	PART NUMBER
#312 Ball Bearing Tip-Top	12/64 in	BBSHD312
#314 Ball Bearing Tip-Top	14/64 in	BBSHD314
#316 Ball Bearing Tip-Top	16/64 in	BBSHD316
#318 Ball Bearing Tip-Top	18/64 in	BBSHD318
#320 Ball Bearing Tip-Top	20/64 in	BBSHD320
#322 Ball Bearing Tip-Top	22/64 in	BBSHD322
#324 Ball Bearing Tip-Top	24/64 in	BBSHD324
#326 Ball Bearing Tip-Top	26/64 in	BBSHD326
#328 Ball Bearing Tip-Top	28/64 in	BBSHD328
#330 Ball Bearing Tip-Top	30/64 in	BBSHD330
#332 Ball Bearing Tip-Top	32/64 in	BBSHD332
#334 Ball Bearing Tip-Top	34/64 in	BBSHD334
#336 Ball Bearing Tip-Top	36/64 in	BBSHD336

COLORS: Black/Gold (BG)



DESCRIPTION	PART NUMBER
#31 HD Guide	HD31
#41 HD Guide	HD41
#51 HD Stripper Guide	HD51
Complete Set of 5 (Includes 2 #31s, 2 #41s, 1 #51)	HD56

COLORS: Black (B), Chrome (CRM)

HEAVY DUTY ROLLER GUIDES

AFTCO's Heavy Duty (HD) roller guides, with ample room for heavy lines and large knots, are ideal for big game trolling and deep water rods rated for 20 to 80-lb lines, and for stand-up style tuna rods up to a 130-lb test rating. Each features AFLON™ high performance bearings. Standard roller tip-tops are the perfect match for this guide series.

The configuration of all AFTCO Heavy Duty Roller Guides is trademarked under Registration #1,615,844

REGULAR ROLLER GUIDES

AFTCO's Regular roller guides are ideal for light line bluewater trolling, and for deep water live-bait or jigging rods rated for 16 to 50-lb lines. Each features AFLON™ high performance bearings. Standard roller tip-tops also match up with these guides.

The configuration of the AFTCO #R5 Regular Roller Guide is trademarked under Registration #1,616,853

The configuration of AFTCO #R2, #R3, #R4 Regular Roller Guides is trademarked under Registration #1,615,845



DESCRIPTION	PART NUMBER
#2 Regular Guide	R2
#3 Regular Guide	R3
#4 Regular Guide	R4
#5 Regular Guide	R5
Complete Set of 5 (Includes 2 #2s, 1 ea. #3, #4, #5)	R16

COLORS: Black (B), Chrome (CRM)

STANDARD ROLLER TIP-TOPS

With universal applications for all types and standard sizes of saltwater trolling and deep water rods, our Standard roller tip-tops are equipped with our modified rollers and feature AFLON™ bearings. Designed to match up with both our Heavy Duty and Regular roller guide sets, they are available in large head (L) versions in many sizes. The "L" models offer extra knot clearance.

The configuration of AFTCO Standard Roller Tops is trademarked under Registration #1,643,711



DESCRIPTION	INNER DIA.	PART NUMBER
#108L Standard Top Large	8/64 in	RTL108
#109L Standard Top Large	9/64 in	RTL109
#110L Standard Top Large	10/64 in	RTL110
#112 Standard Top	12/64 in	RT112
#112L Standard Top Large	12/64 in	RTL112
#114 Standard Top	14/64 in	RT114
#114L Standard Top Large	14/64 in	RTL114
#116 Standard Top	16/64 in	RT116
#116L Standard Top Large	16/64 in	RTL116
#118 Standard Top	18/64 in	RT118
#120 Standard Top	20/64 in	RT120
#122 Standard Top	22/64 in	RT122
#124 Standard Top	24/64 in	RT124
#126 Standard Top	26/64 in	RT126
#128 Standard Top	28/64 in	RT128
#130 Standard Top	30/64 in	RT130
#132 Standard Top	32/64 in	RT132

COLORS: Black (B), Chrome (CRM)



DESCRIPTION	PART NUMBER
#2 Lightweight Guide	L2
#2.5 Lightweight Guide	L2.5
#3 Lightweight Guide	L3
#4 Lightweight Guide	L4
#5 Lightweight Guide	L5
#6 Lightweight Guide	L6

COLORS: Titanium (TI)



DESCRIPTION	INNER DIA.	PART NUMBER
#5 Lightweight Tip-Top	5/64 in	LT5
#6 Lightweight Tip-Top	6/64 in	LT6
#7 Lightweight Tip-Top	7/64 in	LT7
#8 Lightweight Tip-Top	8/64 in	LT8
#9 Lightweight Tip-Top	9/64 in	LT9
#10 Lightweight Tip-Top	10/64 in	LT10
#12 Lightweight Tip-Top	12/64 in	LT12
#14 Lightweight Tip-Top	14/64 in	LT14

COLORS: Titanium (TI)

LIGHTWEIGHT ROLLER GUIDES

AFTCO Lightweight Roller Guides bring new standards of guide performance to a wide range of fresh and saltwater rods designed for 2 to 30-lb test monofilament line. They are lighter than most ring guides, yet twice as tough. With rugged graphite composition frames and pure titanium guards and rollers, Lightweight Guides are virtually unbreakable, and their single-foot design and ultra-light weight in no way inhibit the action of lighter graphite and fiberglass blanks. Lightweight Guides require virtually no maintenance, and are available in Black Frames with Titanium guards. A typical set would include one #6 (stripper guide), one #5, two #4's, two #3's, one #2.5 and one #2, but the make-up of the set will vary with the blank and its particular taper. The rollers and bearings of the #6 to #2 guides and LT-Series tip-tops are interchangeable.

The configuration of all AFTCO Lightweight Roller Guides is trademarked under Registration #1,615,844

LIGHTWEIGHT ROLLER TIP-TOPS

AFTCO Lightweight Roller Tip-Tops can be affixed to the blank with a good epoxy or "hot melt" top glue, providing your glue's melting point does not exceed 300 degrees F. A small propane or gas torch may be used to heat the tube before fitting it into the blank, but be careful—over-heating can melt the tube. With a little practice, the proper amount of heat can be applied with no damage to the tip-top tube. Lightweight Tip-Tops require virtually no maintenance, and are available in Black Frames with Titanium guards.



SHD SWIVEL TOPS

Keeps line in the center of the roller so it touches only the roller and the super hard ceramic ring in the bail, eliminating wear on the sides of the frame. Modified roller is stainless steel, with oversized diameter to minimize stress on the wire. Fitted with AFLON™ bearings.

DESCRIPTION	INNER DIA.	PART NUMBER
#614 SHD Swivel Top	14/64 in	ST614
#616 SHD Swivel Top	16/64 in	ST616
#618 SHD Swivel Top	18/64 in	ST618
#620 SHD Swivel Top	20/64 in	ST620
#622 SHD Swivel Top	22/64 in	ST622
#624 SHD Swivel Top	24/64 in	ST624
#626 SHD Swivel Top	26/64 in	ST626
#628 SHD Swivel Top	28/64 in	ST628
#630 SHD Swivel Top	30/64 in	ST630
#632 SHD Swivel Top	32/64 in	ST632

COLORS: Black (B), Chrome (CRM)



STANDARD SWIVEL TOPS

Specially designed for "lighter" wire line fishing, the articulated bail, with its ceramic ring, keeps lighter wire running on the center of the stainless roller, and keeps the wire from touching the frame. The modified #3 roller is oversized to minimize stress on the light wire, and all of the small swivel tops are fitted with AFLON™ bearings.

DESCRIPTION	INNER DIA.	PART NUMBER
#109 Standard Swivel Top	9/64 in	SST109
#110 Standard Swivel Top	10/64 in	SST110
#112 Standard Swivel Top	12/64 in	SST112
#114 Standard Swivel Top	14/64 in	SST114
#116 Standard Swivel Top	16/64 in	SST116
#118 Standard Swivel Top	18/64 in	SST118

COLORS: Black (B), Chrome (CRM)

DESCRIPTION	ROLLER	BEARING	PIN	SCREW	ASSEMBLY	END PLATE	COVER PLATE	GUARD	BAIL
SXHD GUIDES									
#62, #72, #82 SXHD Guides	GR3	GB3 SS	GP3	S3	GRA3	EP4 B	CP4 SS		
All SXHD Ball Bearing Guides					BBRA3 GLD				
Colors for Roller, Pin, Screw & Assembly: Gold (GLD), Stainless Steel (SS)									
SXHD TIP-TOPS									
All SXHD Tip-Tops	GR3	GB3 SS	GP3	S3	GRA3	EP4 B	CP4 SS		
All SXHD Ball Bearing Tip-Tops					BBRA3 GLD				
Colors for Roller, Pin, Screw & Assembly: Gold (GLD), Stainless Steel (SS)									
SUPER HEAVY-DUTY/ WIND-ON GUIDES									
#32, #42 SHD Guides	GR2	GB2 SS	GP2	S3	GRA2				
#52, SHD Stripper Guide	GR3	GB3 SS	GP3	S3	GRA3				
#22, #47 Wind-On Guides	GR2	GB2 SS	GP2	S3	GRA2				
#32, #42 SHD Ball Bearing Guides					BBRA2 GLD				
#52, SHD Ball Bearing Stripper Guide					BBRA3 GLD				
#22, #47 Wind-On Ball Bearing Guides					BBRA2 GLD				
Colors for Roller, Pin, Screw & Assembly: Gold (GLD), Stainless Steel (SS)									
SUPER HEAVY-DUTY/ WIND-ON TIP TOPS									
All SHD Tip-Tops	TR5	TB5 SS	TP5	S3	TRA5				
All SHD Ball Bearing Tip-Tops					BBRA5 GLD				
Colors for Roller, Pin, Screw & Assembly: Gold (GLD), Stainless Steel (SS)									
HEAVY-DUTY GUIDES									
#31, #41, #51 HD Guides	GR1	GB1 SS	GP1	S2	GRA1				
Colors for Roller, Pin, Screw & Assembly: Gold (GLD), Stainless Steel (SS)									
REGULAR GUIDES									
#2, #3, #4, #5 R Guides	GR1	GB1 SS	GP1	S2	GRA1				
Colors for Roller, Pin, Screw & Assembly: Gold (GLD), Stainless Steel (SS)									
STANDARD TIP-TOPS (USED WITH HEAVY-DUTY& REGULAR GUIDES)									
#108L to #110L, #112, #114 Tops	TR2	TB2 SS	TP2	S2	TRA2				
#116, #118, #120 Tops	TR3	TB3 SS	GP1	S2	TRA3				
#122 to #132, #112L, #114L, #116L Tops	TR4	GB1 SS	TP4	S2	TRA4				
Colors for Roller, Pin, Screw & Assembly: Gold (GLD), Stainless Steel (SS)									
LIGHTWEIGHT GUIDES									
#2 to #5 Lightweight Guides	LGR1 TI	LGB1 B						LGG1	
#6 to Lightweight Guides	LGR1 TI	LGB1 B						LGG6	
Colors for Guard: Black (B), Gold (GLD), Titanium (TI)									
LIGHTWEIGHT TIP-TOPS									
#5 to #12 LT Tip-Tops	LGR1 TI	LGB1 B						LTG1	
#14 Tip-Top	LGR1 TI	LGB1 B						LGG1	
Colors for Guard: Black (B), Gold (GLD), Titanium (TI)									
SHD SWIVEL TOPS									
#614 to #632 ST Tops	TR5	TB5 SS	GP3	S3	STA2 SS				STBAIL2
Colors for Roller, Pin, & Screw: Gold (GLD), Stainless Steel (SS)			Colors for Bail: Black (B), Chrome (CRM)						
STANDARD SWIVEL TOPS									
#109 to #118 SST Tops	TR3	TB3 SS	SSTPIN3	STS2 SS	STA1 SS				SSTBAIL1
Colors for Roller: Gold (GLD), Stainless Steel (SS)			Colors for Bail: Black (B), Chrome (CRM)						

ROD BUILDING GUIDE

LIGHT TACKLE

Rods that are designed for use with ultralight through 30-lb test monofilament or braided lines.



SEATS / BUTTS

Rod builders will use Unibutts® in the #1 or #1 Short sizes for light tackle rods designed strictly for trolling.

MEDIUM TACKLE



SEATS / BUTTS

Rod builders will opt for using Unibutts® in the #2, #2 Short or #2 Short Curved sizes for rods designed strictly for heavier stand-up fishing or big water trolling.

HEAVY STAND-UP TACKLE



SEATS / BUTTS

For extra heavy stand-up and trolling applications, rod builders will often opt for Unibutts® or Storabutts® in the #2, #2 Short or #2 Short Curved sizes where heavy lines are in order for giant tuna or marlin.

IGFA HEAVY TACKLE

Rods that are designed for big game fishing using any variety of 80-lb to unlimited strength monofilament or braided lines.



SEATS / BUTTS

Nothing less than AFTCO Unibutts® or Storabutts® are the professional choice for battling the biggest bluewater game fish under the most extreme conditions. Choose from #4 or #6 sizes in either straight or curved models. Knowing that curved Unibutts® or Storabutts® offer a 30% leverage advantage when pulling on huge fish from a fighting chair makes choosing the right butt easier.

We are continually fielding questions from anglers and rod builders seeking our guidance in choosing and matching the correct roller guides and rod butts for custom-building fishing rods that will perform at the highest level. With many lengths and actions of rod blanks available, it's difficult to address every scenario. We've selected four popular rod types, and with the guidelines below, hope that we have provided enough answers to point rod builders in the right direction.



GUIDES / TOPS

AFTCO Lightweight roller guides and tip-tops are the obvious choice here. These work great for all monofilament lines up to 40-lb test and braided lines up to 65-lb test. There is no standardized set for AFTCO Lightweight series guides, but most rods will use at least one guide per foot over overall length, plus one. For example, an 8 foot rod would usually use 9 lightweight guides plus the tip-top.



GUIDES / TOPS

AFTCO Heavy-Duty guides are generally recommended for stand-up rods designed for use with 30 to 100-lb test lines of all types. AFTCO regular guides are the best choice for lighter action rods built for use with 30 to 50-lb test lines. AFTCO regular tip-tops will work for most applications, being mindful that large head tip-tops are a better choice where leadered lines might require slightly more rod clearance at the rod tip.



GUIDES / TOPS

AFTCO Wind-On roller guides or Ball Bearing Wind-On roller guides are the best choice when building rods where heavy leaders are being used in extreme bluewater conditions. For such applications, AFTCO Super Heavy-Duty tip-tops in either the standard or ball bearing versions should be the ideal match for these guides.



GUIDES / TOPS

AFTCO Super Heavy-Duty roller guides or Ball Bearing Super Heavy-Duty roller guides have long been a favorite choice to max out the performance potential of the heaviest rods when fighting the biggest fish under the most extreme conditions. AFTCO Super Heavy-Duty tip-tops in either the standard or ball-bearing versions should be the ideal match for SHD guides when fishing heavy lines and leaders for giant marlin, tuna and sharks. Where maximum knot clearance and added strength are paramount, the ultimate choice is AFTCO SXHD roller guides matched with SXHD tip-tops



UNIBUTTS®

The one-piece Unibutt® aluminum butt and reel seat is “unitized” for maximum strength and minimum weight. The aligning pin-plug, gimbal and fixed hood are locked in permanent alignment so that gimbal, reel and rod guides always line up perfectly. The ferrules are precision-machined to ensure complete interchangeability of rod tip sections, and an O-ring on the ferrule prevents corrosion between ferrule and reel seat. A Teflon™ ring inside the collet nut assures a snug fit, prevents galling and allows easy removal of the nut.

Note: If ordering replacements for existing rods, all Unibutts® and Storabutts® are available without ferrule and collets nuts.



PART NUMBER	LINE CLASS	LENGTH	INNER DIA.	OUTER DIA.
STRAIGHT				
UBS1	4-lb to 30-lb	18.5 in	.750 in	.838 in
UB1	4-lb to 30-lb	20.5 in	.750 in	.838 in
UBS2	30-lb to 50-lb	19.0 in	.875 in	.970 in
UB2	30-lb to 50-lb	20.5 in	.875 in	.970 in
UB4	80-lb	24.0 in	1.000 in	1.133 in
UB6	130-lb to Unlimited	24.5 in	1.188 in	1.336 in
CURVED				
UBSC2	30-lb to 80-lb	21.5 in	.875 in	.970 in
UBC2	30-lb to 50-lb	29.5 in	.875 in	.970 in
UBSC4	80-lb	24.5 in	1.000 in	1.133 in
UBC4	80-lb	30.5 in	1.000 in	1.133 in
UBC6	130-lb to Unlimited	30.5 in	1.188 in	1.336 in

COLORS: Black (B), Black/Gold (BG), Black/Shimano Gold (BSHG), Silver (S)

The configuration of AFTCO Unibutts® is trademarked under Registration #2,082,683

Unique two-piece unit offers the advantage of separating the reel seat from the butt section for easy storage



STORABUTTS®

The AFTCO Storabutt® has all of the characteristics of the AFTCO Unibutt®, but with the advantage of being able to separate the reel seat from the rod butt for easy storage. The reel seat is ferruled at both ends to permit removal of the butt section of your rod without having to also remove your reel, which would otherwise disturb your terminal tackle. This makes it easier to store rods, particularly those with curved butts, on boats where storage space is limited. The Storabutt® is available in either curved or straight models for 50-lb to 130-lb class rods.



PART NUMBER	LINE CLASS	LENGTH	INNER DIA.	OUTER DIA.
STRAIGHT				
SBS2	50-lb	19.0 in	.875 in	.970 in
SB2	50-lb	21.5 in	.875 in	.970 in
SB4	80-lb	23.5 in	1.000 in	1.133 in
SB6	130-lb	25.0 in	1.188 in	1.336 in
CURVED				
SBSC2	50-lb	22.0 in	.875 in	.970 in
SBC2	50-lb	29.5 in	.875 in	.970 in
SBSC4	80-lb	24.0 in	1.000 in	1.133 in
SBC4	80-lb	30.5 in	1.000 in	1.133 in
SBC6	130-lb	30.5 in	1.188 in	1.336 in

DESCRIPTION	PART NUMBER
SB2 Seat	SBSEAT2
SB2 Butt	SBUTT2
SB2 Curved Butt	SBUTTC2
SB2 Short Butt	SBUTTS2
SB2 Short Curved Butt	SBUTTSC2
SB4 Seat	SBSEAT4
SB4 Butt	SBUTT4
SB4 Curved Butt	SBUTTC4
SB4 Short Curved Butt	SBUTTSC4
SB6 Seat	SBSEAT6
SB6 Butt	SBUTT6
SB6 Curved Butt	SBUTTC6

COLORS: Black (B), Black/Gold (BG), Black/Shimano Gold (BSHG), Silver (S)



COLLET NUTS

AFTCO collet nuts are machined from 6061-T6 aluminum and anodized. A dry film Teflon™ lubricant on the threads facilitates easy removal.

FITS MODEL	PART NUMBER
All #1 Models	CN1
All #2 Models	CN2
All #4 Models	CN4
All #6 Models	CN6

COLORS: Black (B), Gold (GLD), Silver (S), Shimano Gold (SHG)



FERRULES

Designed for Unibutts® and Storabutts®, AFTCO precision-machined ferrules are O-ring sealed to keep moisture out and prevent corrosion.

FITS MODEL	INNER DIAMETER	OUTER DIAMETER	PART NUMBER
All #1 Models	.750 in	.838 in	F1
All #2 Models	.875 in	.970 in	F2
All #4 Models	1.000 in	1.133 in	F4
All #6 Models	1.188 in	1.336 in	F6

COLORS: Black (B), Silver (S)



10% PLEDGE

Protect & Conserve

Every year since 1973 - AFTCO and the Shedd family have contributed more than 10% of company profits to help protect our resources and ensure a sustainable fishery for future generations.



THIS CATALOG IS PRINTED ON RECYCLED PAPER

2400 S GARNSEY ST, SANTA ANA, CA 92707 • (949) 660-8757 • AFTCO.COM